



lab
concept
GmbH

The modular media supply system

QUICKLAB®

Media Column MC-X



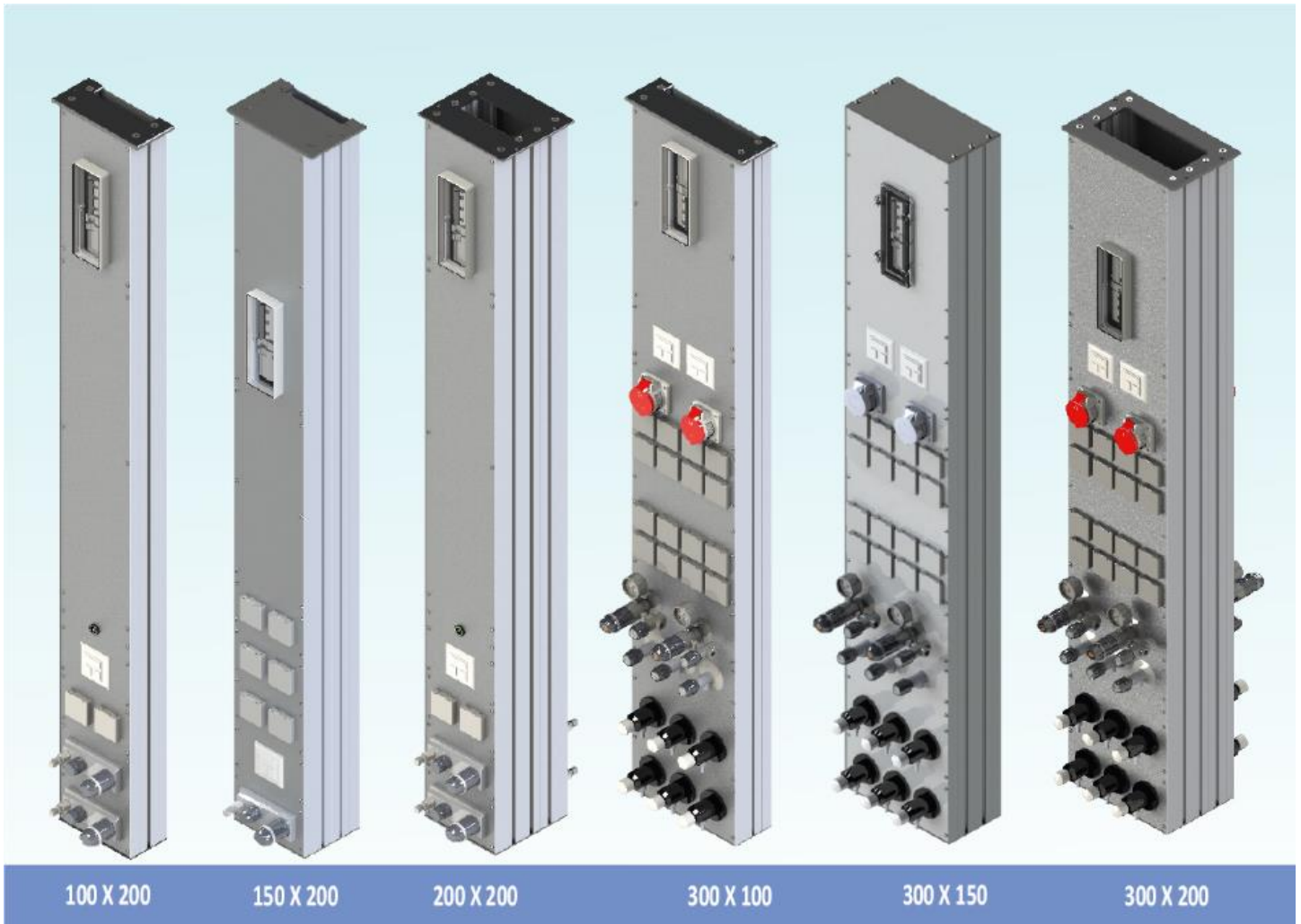




PROBLEM OUTLINES IN MODERN LABORATORIES AND THEIR SOLUTION

The requirements in laboratories are changing permanently. Media are needed in different amounts, quality and quantity. This is why a static supply system is not sufficient for the requirements of a modern scientific laboratory. The solution lies within a modular system which grows with the requirements.

The media column can be individually equipped and ordered in various sizes. Length, depth and width are compatible with the customer's requirements.





MEDIA COLUMN MC-X

Media columns are used to supply laboratory workstations with all kinds of media. These media can be electrical, gaseous or aqueous media of varying quality and quantity. The usage by the customer can take place at wall benches or at double benches. For this reason, Lab Concept has developed a complete kit of various media columns, the series of which are listed below and briefly explained.

MC₁ SYSTEM: DEPTH 100 MM, WIDTH 200 MM

The main system MC₁ consists of a main body with 100 mm depth and is designed as a one-sided electronical media column with possibility to install also a own number of gas fittings.

MC₂ SYSTEM: DEPTH 150 MM, WIDTH 200 MM

The main system MC₂ consists of a main body with 150 mm depth and is designed as a one-sided electronical and media column with high media equipment. This system can also be used as a double electronical media column with low gas fittings.

MC₃ SYSTEM: DEPTH 200 MM, WIDTH 200 MM

The main system MC₃ consists of a main body with 200 mm depth and is designed as a double electronical media column with a high number of media equipment.

MC₄ SYSTEM: DEPTH 100 MM, WIDTH 300 MM

The main system MC₄ consists of a main body with 100 mm depth and is designed as a one-sided media column with a high number of media equipment.

MC₅ SYSTEM: DEPTH 150 MM, WIDTH 300 MM

The main system MC₅ consists of a main body with 150 mm depth and is designed as a wall media column with a high number of media equipment.

MC₆ SYSTEM: DEPTH 200 MM, WIDTH 300 MM

The main system MC₆ consists of a main body with 150 mm depth and is designed as a double media column with a high number of media equipment.

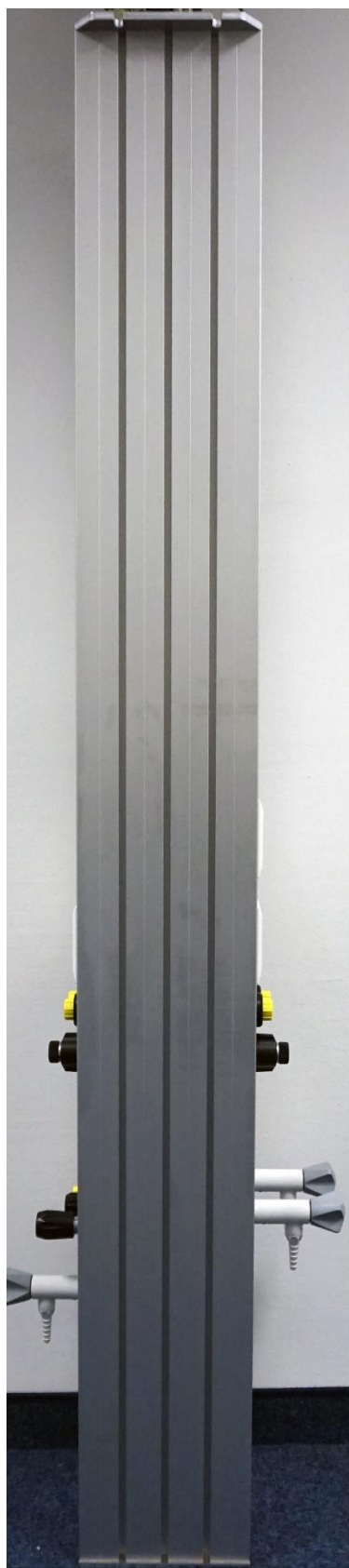
Column	H (mm)	W (mm)	D (mm)
MC-1 (ES)	1.740	200	100
MC-2 (ES,DS)	1.740	200	150
MC-3 (DS)	1.740	200	200
MC-4 (ES)	1.740	300	100
MC-5 (ES,DS)	1.740	300	150
MC-6 (DS)	1.740	300	200



VARIABILITY/RETROFITTING

As tasks in a laboratory are perpetually changing, so is the equipment used. Media supply systems can be accessed easily from both sides for installation and can be altered easily without the need of special tools.







MAXIMISING THE USABLE DEPTH

To date middle desks with fixed installation stations are build in laboratories. These solutions have extensive space requirements. Space which then ist not available for equipment or experiments. Whereas a ceiling-fixed pillar system leaves the whole desk depth available. The desks can even be removed completely as they do not include installations.



MOUNTINGS

The media column can be mounted on the wall or in the ceiling.

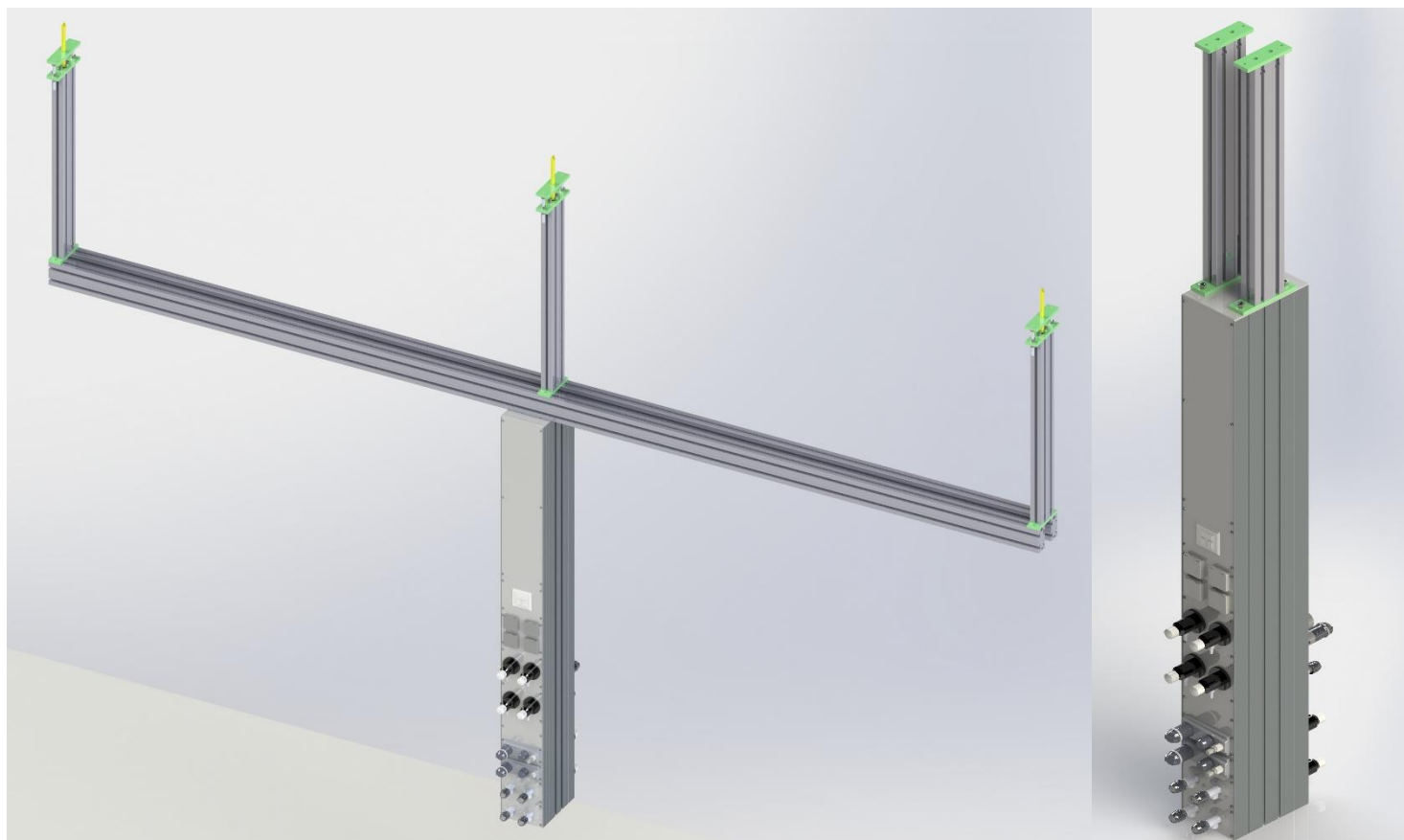
MOUNTING SINGLE COLUMN

The column is mounted directly in the slab ceiling with a single fastening. The suspension is done with a torsion-resistant and anti-rotation rigid profile.



MOUNTING ON A GRID

The column is mounted on cross-profiles fastened in the slab ceiling. The cross-profiles are torsion-resistant double profile systems fit maximum stability. The pillar can be axially moved in lengthwise direction.



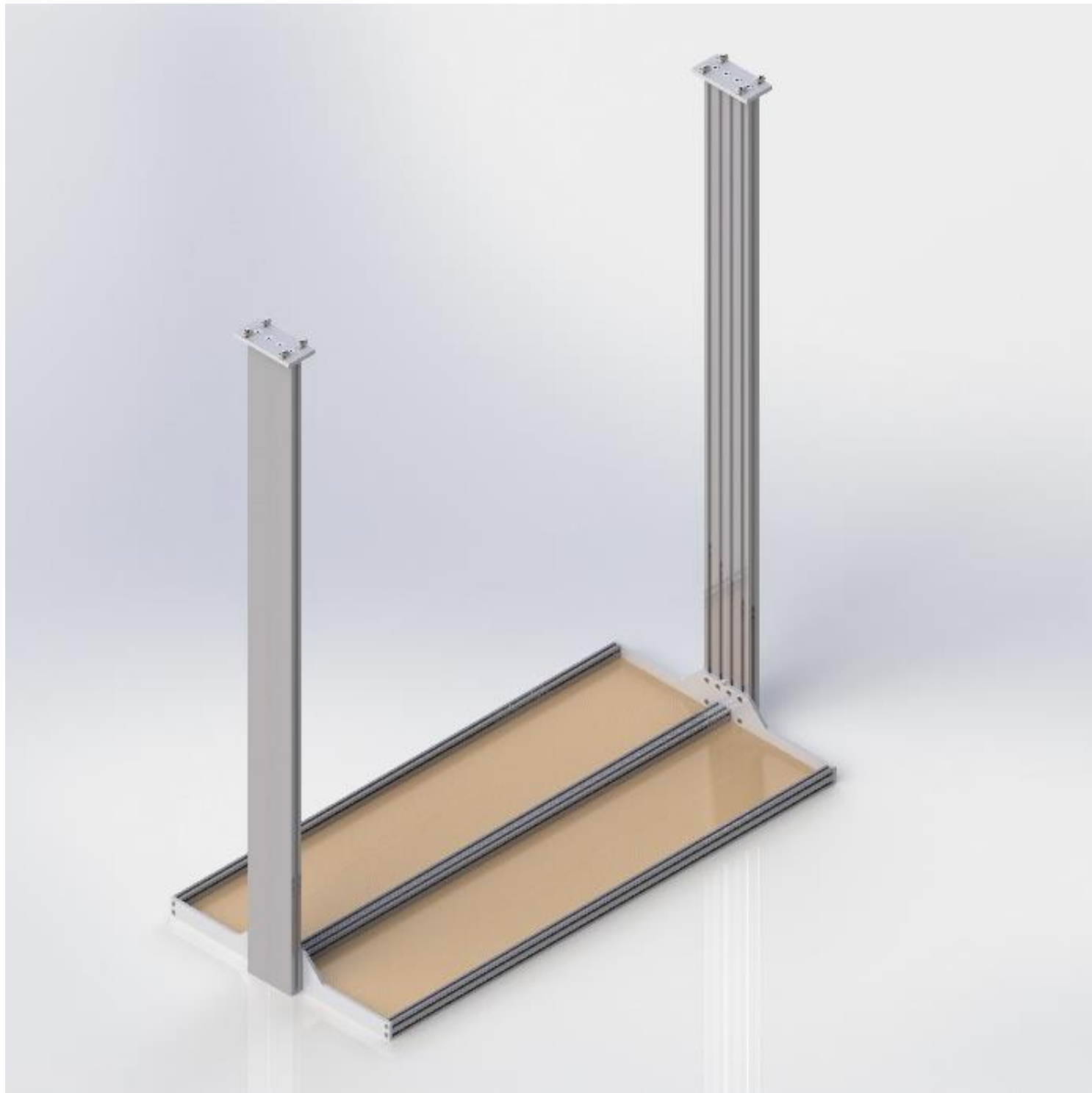
WALL MOUNTED SYSTEM

Here, the pillar is mounted directly on the wall with a single fastening.



SHELVES

The media columns have side slots, where glass partitions or shelves can be attached. Additionally, there are separate hanging carriers available, which makes the usage of shelves possible even without media columns.





MEDIA SUPPLY SYSTEM

The media supply system has a modular design. The media supplies are in separate media channels, whereas the modules consist of interchangeable media usage covers and can easily be exchanged without the need of special tools while operating.

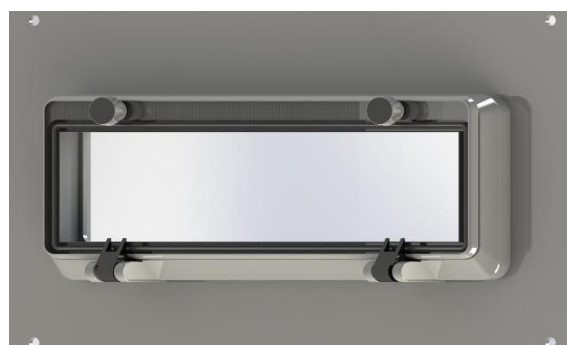
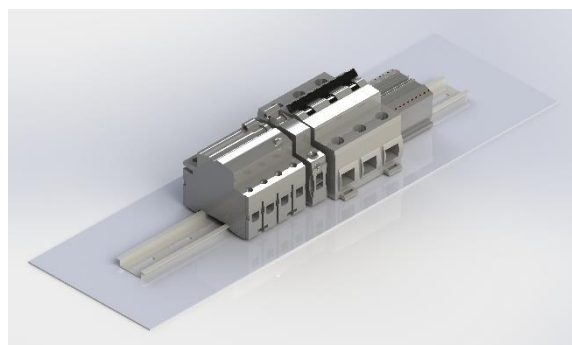
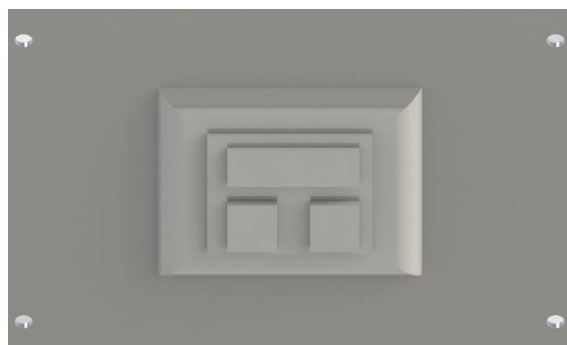
The system can be operated from two sides and equipped with different media usage covers.





ELECTRICAL INSTALLATION

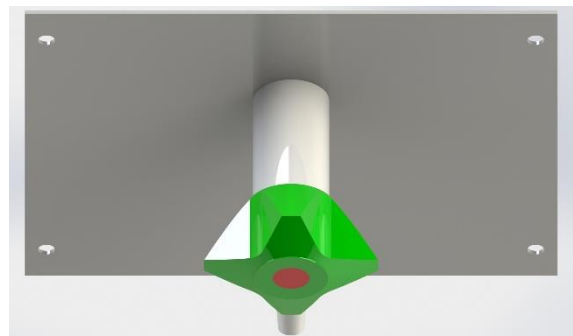
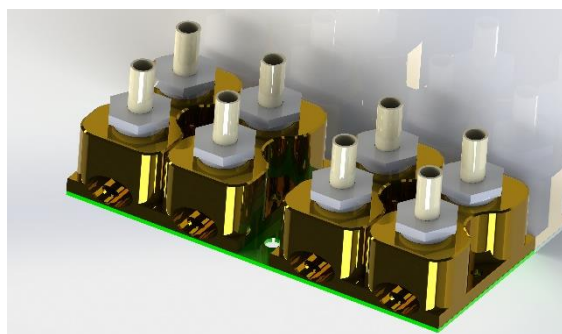
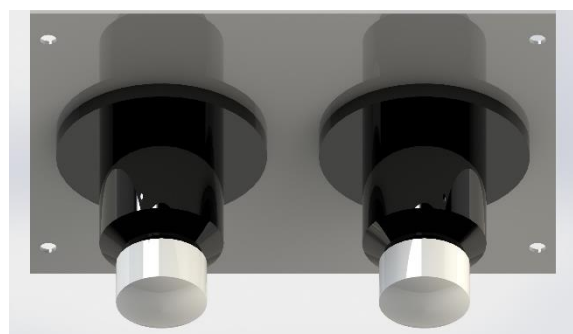
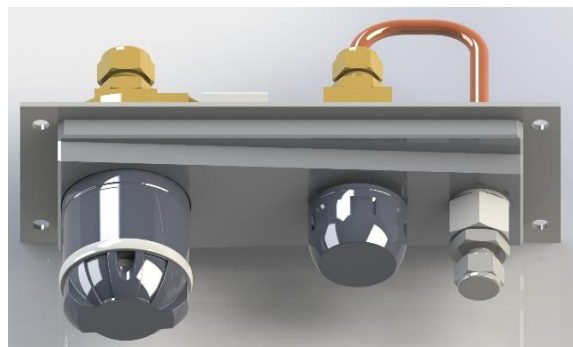
All electrical components are built in separate casings. Numerous modules are available. All conventional manufacturers are compatible.





SANITARY/GASES

All components are built in separate modules. Numerous modules are available. All regular manufacturers are compatible. Additional connection blocks with self-closing couplings can be mounted on the grid system.





AUTOMATION

Activities performed in laboratories are reproduced and documented in compliance with exact parameters. This system can be designed with automation components. Installed controllers are the base for automation, which is operated by a touch screen control panel.

The following components are available:

- Linear actuator system for motor driving the media pillar
- Socket switch
- Usage measurement of sockets
- Switch and flow control of gaseous media
- Switch and control of vacuum components
- Switch and metering of fluids

Touch-Screen PC



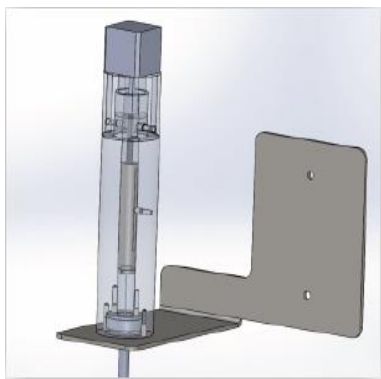
Socket Switch



Linear Actuator



Fluid Meter



Vacuum-Controller



Usage Measurement





COLOUR CONCEPT

The system consists of a main channel with different depths, front side plates, media removal covers and the rear panel.

MAIN CHANNEL, 100, 150, 200 MM

Colour based on EURAS, A6/CO semi-matte

Surface based on DIN 17611 semi-matte pickled, clear anodized, coating thickness 13 µm

MEDIA REMOVAL COVER, 200 MM

Colour based on EURAS, A6/CO semi-matte

Surface based on DIN 17611 semi-matte pickled, clear anodized, coating thickness 13 µm

REAR PANEL, 200 MM

Colour based on EURAS, A6/CO semi-matte

Surface based on DIN 17611 semi-matte pickled, clear anodized, coating thickness 13 µm

FRONT SIDE PLATES

Colour based on EURAS, A6/CO semi-matte

Surface based on DIN 17611 semi-matte pickled, clear anodized, coating thickness 13 µm

System is also available in powder coating RAL 9010 if requested.



RAL 9010



A6 / CO





INNOVATIVE SOLUTION FOR YOUR LABORATORY




**lab
concept**
GmbH

You can reach us!

Lab Concept GmbH
Heisinger Strasse 12
87437 Kempten
Telefon: +49 831 745 898 30
info@lab-concept.eu
www.lab-concept.eu

Disclaimer:

This message contains the current status of the catalog. Any use by third parties is prohibited. We reserve the right to make technical changes at any time.